

STATE OF CLAD®

The authority for beautiful cladding.

Exclusive distributor of Cemintel Territory™, Cemintel Surround™ & Cemintel Barestone™

CEMINTEL
TERRITORY

CEMINTEL
BARESTONE

CEMINTEL
SURROUND

A&D. One.V2



Cemintel Barestone - Graphite

Designing façades is the frontier of the future, where technology and high performance is combined with aesthetics and functionality. The focus in construction and manufacturing has now shifted to *what can be achieved?*

State of Clad is the home of carefully curated, design driven lightweight cladding systems within the NZ Brick Distributors LP stable of brands. We are the exclusive distributor of Cemintel Territory™, Cemintel Surround™ and Cemintel Barestone™ for the New Zealand architectural, construction and design communities. As our journey of innovation has just started, we continue to source beautiful cladding from our international partners, CSR and Brickworks, just for you.

Happy designing
State of Clad Team

Contents

5

Product Selection Guide

6

Fibre Cement Cladding System

8

Cemintel Territory™

14

Cemintel Surround™

20

Cemintel Barestone™

26

Enquiries & Partner Platforms

Product Selction Guide

This matrix provides common applications of the products.
For feedback regarding suitability of products for other
specific applications, please contact us.

			TYPE		WHERE		APPLICATION							FINISH			JOINTING			INSTALLATION				
PRODUCT	PAGE		Residential	Commercial	Internal	External	Façades & Cladding	Internal Linings	Flooring & Decking	Ceilings	Eaves/Soffits	Wet Areas	Rigid Air Barrier	Pre-finished	Pre-primed/Sealed	Raw/Unprimed	Express	Visible	Concealed (minimal visibility)	Horizontal	Vertical	Diagonal	Curved	
EAVES & SOFFITS	Surround™	14	●	●	●	●	●	●		●*	●*			●			●	●						
	Barestone™	20	●	●		●	●			●*	●*			●			●	●						
FAÇADES & CLADDING	Territory™	8	●	●	●	●	●	●						●				●	●		●	●		
	Surround™	14	●	●	●	●	●	●						●			●	●			●	●	●	
	Barestone™	20	●	●		●	●			●				●			●				●	●	●	●
INTERNAL LININGS	Territory™	8	●	●	●	●	●	●						●			●	●	●		●	●		
	Surround™	14	●	●	●	●	●	●						●			●	●			●	●		
	Barestone™	20	●	●	●			●						●			●	●	●		●	●		
AIR BARRIER	Rigid Air Barrier™		●	●		●							●		●			●			●	●		

* Customised solutions can be provided upon request. Please contact us.



CEMINTEL®
TERRITORY

CEMINTEL®
SURROUND

CEMINTEL®
BARESTONE

Fibre cement products are made from natural ingredients. Ground Sand (Silica), Cement, Air, Water, Cellulose/Polyester Fibre, Additives e.g. sealers. Fibre cement does not contain magnesium chloride (salt).

Fibre Cement Cladding Systems

The Fibre Cement Cladding products available exclusively in New Zealand through State of Clad are: Cemintel Territory, Cemintel Surround and Cemintel Barestone, each with their unique installation system. Cemintel® is part of the Australian owned icon, CSR Limited, manufacturing and supplying cement panels and building systems used for external façades, internal linings, ceilings and flooring which are suitable for use in commercial and residential applications.

Fibre cement products are becoming more popular in building due to a number of properties of the material:

- Durability
- Impact resistance
- Fire resistance
- Moisture resistance

In addition to these material properties, fibre cement products provide significant design flexibility.

- Material Choice. With many different profiles, thicknesses, sizes, colours and textures available; they can be mixed and matched to produce amazing and beautiful buildings.

- Durable and low maintenance. Fibre cement products are dimensionally stable, especially when compared to timber. They also hold colour very well, so they don't need frequent repainting, which can happen with some other products such as timber and render products. Prefinished options are also available.

- Increased speed of construction & easy to install. Fibre cement products and systems can increase speed of construction through fewer trades being required, and scaffold hire reduction. This can assist reaching lockup stage sooner.

Cemintel Territory™

Cemintel Territory prefinished panels are cement bonded, fibrous wood particle cladding that are pressed with a surface texture and colour.

Cemintel Territory is a natural cladding range that comes from Japanese values of simplicity, nature and quality. It is a building block to your home style.

The prefinished cladding panels simulate materials like stone, timber, concrete, metal, tiles and smooth render in a sophisticated way to enhance building façades without the ongoing maintenance requirements.

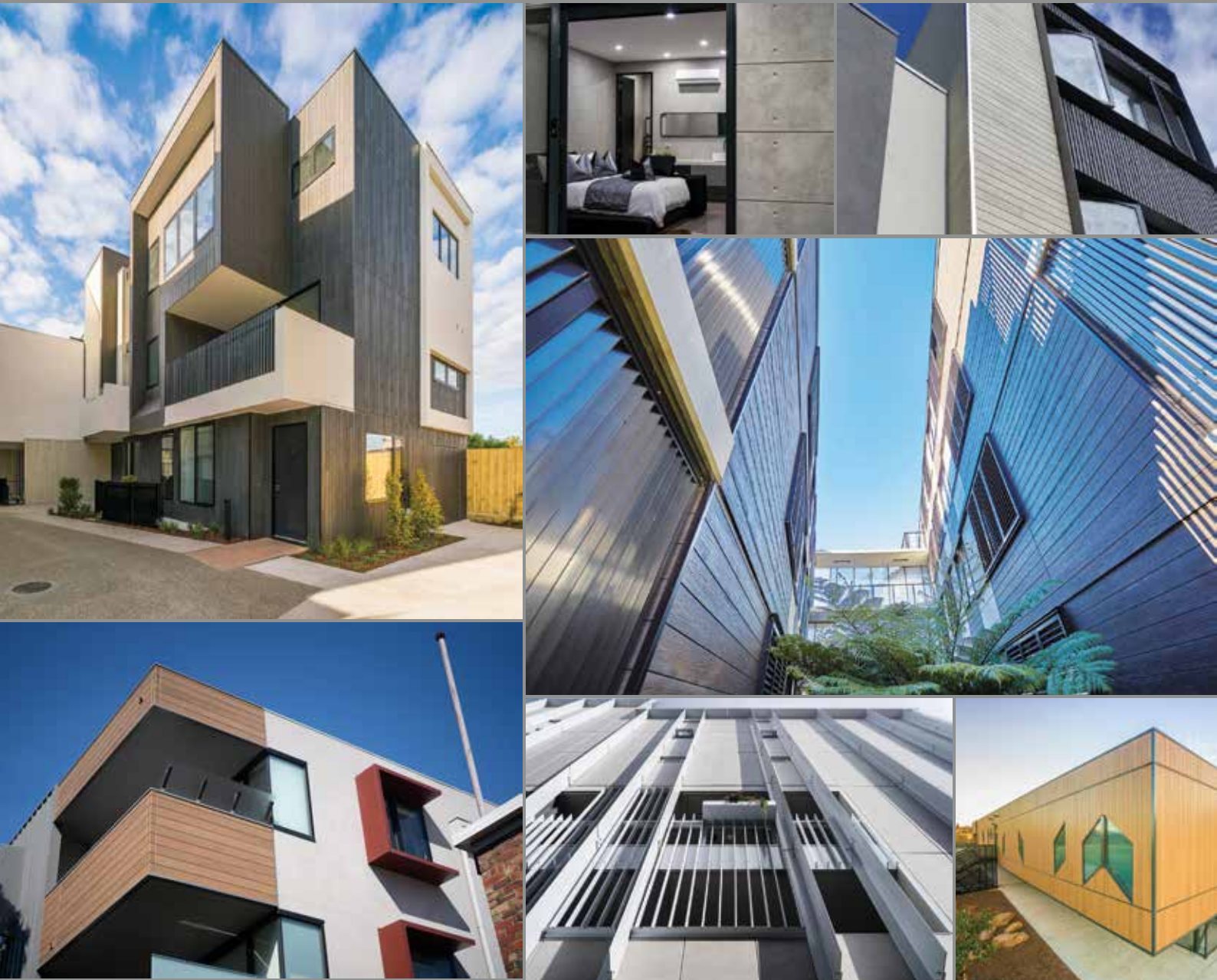
Panels are factory quality controlled, and the system has Codemark accreditation under Certificate of Conformity GM-CM30041.

Exclusive in NZ to State of Clad

Cemintel Territory - Quarry Urban Grey

Cemintel Territory™

Projects



Product Specification

Panel Width	470mm (overall width)
	455mm (coverage)
Panel Length	3030mm
Panel Thickness	16mm
Panel Mass (EMC)	17.9-21.8kg/m2 (based on dry weight)

As Territory is a prefinished, manufactured product, images may vary from the actual product in regard to colour and surface finish. Panels should be inspected by the builder/installer prior to installation to ensure they meet aesthetic requirements.

Provenance

Manufactured in Japan by Nichiha to JIS A 5422* (Fibre Reinforced Cement Sidings).

System

The simple, concealed clip fixing system goes together like Meccano once the starter strip is installed. The system provides a ventilated cavity to keep your building dry. The system has a choice of simple aluminium or colour matched, preformed corners to suit your desired aesthetic.

Orientation

Cemintel Territory panels can be installed in either a horizontal or vertical orientation.

Finish

Prefinished using a durable, multi-layer paint process. Nichiguard® stain resistant and self cleaning coating is available on all panels. Additional Platinum Coating technology protects against UV damage and colour fade.

Suitability

Internal and external, commercial and residential.


Availability

Stocked and indent, identified on the colour palette page.

Clockwise from top left: Woodlands Smoked, Quarry Concrete, Woodlands Limed, Woodlands Smoked & Quarry Urban Grey, Woodlands Teak, Quarry Concrete, Woodlands Teak

Cemintel Territory™

Colour Palette

					
Woodlands Teak - STOCKED	Woodlands Grey Gum - STOCKED	Woodlands Ebony - STOCKED	Woodlands Jarrah Slats - STOCKED	Woodlands Kwila Slats - STOCKED	Woodlands Oaky Slats - STOCKED
					
Woodlands Smoked - INDENT	Woodlands Cedar - INDENT	Woodlands Limed - INDENT	Woodlands Birch - INDENT	Quarry Urban Grey - STOCKED	Quarry Concrete - STOCKED
					
Quarry Mottled Rustic Brick - STOCKED	Quarry Black Modern Brick - STOCKED	Quarry Grey Rustic Brick - INDENT	Quarry White Rustic Brick - INDENT	Quarry Mosaic White - INDENT	Quarry Mosaic Ivory - INDENT
					
Quarry Mosaic Brown - INDENT	Ridge Black - STOCKED	Ridge White - STOCKED	Canyon Kings - STOCKED	Canyon Katherine - STOCKED	Canyon Camavon - STOCKED
					
Savanna Cloud - STOCKED	Savanna Haze - STOCKED	Savanna Shadow - STOCKED			

As Territory is a prefinished, manufactured product, images may vary from the actual product in regard to colour and surface finish.
Panels should be inspected by the builder/installer prior to installation to ensure they meet aesthetic requirements.

Cemintel Surround™

Cemintel Surround prefinished fibre cement panels are factory quality controlled, prefinished and ready to be installed. A primary palette of five 'ISH' neutral colours in three discrete patterns and a secondary palette of 16 colours, enabling the creation of endless patterns and designs.

Pigments are added to the body of the panel to produce different base colours, which is where the term 'colour bodied' is derived. Each colour is designed as a standalone, but one that works exceptionally well with different materials and textures.

Exclusive in NZ to State of Clad

Cemintel Surround - Greyish

Cemintel Surround™

Projects



Clockwise from top left: Whiteish, Whiteish Base, Maya & Greenback, Greyish, Whiteish Base & Maya & Blackish Base, Whiteish & Blackish Base, Quinta, Aero & Greenback, Mainland

Product Specification

Panel Width	1200mm
Panel Length	3000mm
Panel Thickness	8mm colour bodied
Panel Mass (EMC)	15.7kg/m2 (based on dry weight)

As Surround is a prefinished, manufactured product, images may vary from the actual product in regard to colour and surface finish. Panels should be inspected by the builder/installer prior to installation to ensure they meet aesthetic requirements.

Provenance

Manufactured in Austria.

System

Aluminium rail system. Colour matched rivets accommodate the differential movement between the building structure and the façade. They also provide a more seamless aesthetic. Only one rivet type is used for both gliding and fixing points, making panel installation uncomplicated.

Orientation

Cemintel Surround panels can be installed in either a horizontal or vertical orientation. They can also be installed on angles giving the most design flexibility.

Finish

Each panel has a final sealant coating applied that will better withstand weathering over time, as well as environmental factors like pollution and microclimatic conditions, such as mould/algae.

Suitability


Internal and external, commercial and residential.

Availability

Indent. Please contact us for lead times.

Cemintel Surround™

Primary Colour Palette

		
Whiteish Base	Whiteish String	Whiteish Leather
		
Greyish Base	Greyish String	Greyish Leather
		
Blackish Base	Blackish String	Blackish Leather
		
Blueish Base	Blueish String	Blueish Leather
		
Greenish Base	Greenish String	Greenish Leather

Cemintel Surround™

Secondary Colour Palette

		
Mainland - SECONDARY	Volta - SECONDARY	Mete - SECONDARY
		
Husk - SECONDARY	Maya - SECONDARY	Hover - SECONDARY
		
Garb - SECONDARY	Greenback - SECONDARY	Truss Grey - SECONDARY
		
Gauze - SECONDARY	Whiteout - SECONDARY	Blackout - SECONDARY
		
Strike - SECONDARY	Aero - SECONDARY	Quinta - SECONDARY
		
		Woodlot - SECONDARY

As Surround is a prefinished, manufactured product, images may vary from the actual product in regard to colour and surface finish. Panels should be inspected by the builder/installer prior to installation to ensure they meet aesthetic requirements.

Cemintel Barestone™

Cemintel Barestone is the original raw concrete look. Sophisticated and contemporary, because it is prefinished, it is low maintenance and doesn't need painting.

Cemintel Barestone can be used in diverse ways and cut to different shapes and sizes for dramatic design effect.

Exclusive in NZ to State of Clad

Cemintel Barestone - Original

Cemintel Barestone™

Projects



Clockwise from top left: Original, Lunar, Ash, Original, Lunar, Original, Graphite, Original

Product Specification

Panel Width	1200mm
Panel Length	3000mm
Panel Thickness	9mm colour through
Panel Mass (EMC)	17.8kg/m2 (based on dry weight)

As Barestone is a prefinished, manufactured product, images may vary from the actual product in regard to colour and surface finish. Panels should be inspected by the builder/installer prior to installation to ensure they meet aesthetic requirements.

Provenance

Manufactured in Australia.

System

Aluminium rail system. Colour matched rivets are available to accommodate the differential movement between the building structure and the façade. They also provide a more seamless aesthetic.

Orientation

Cemintel Barestone panels can be installed in either a horizontal or vertical orientation. They can also be installed on angles giving the most design flexibility.

Finish

The panels feature Ceminseal™ water-blocking technology and are factory sanded, ready for installation.

Suitability

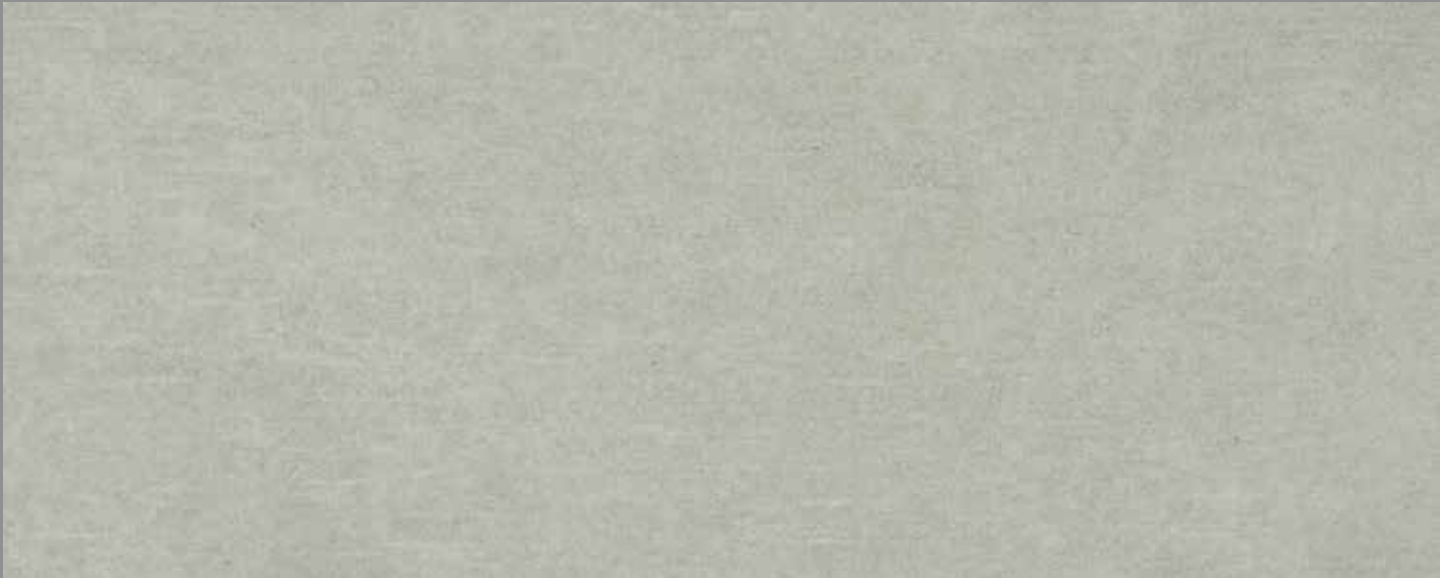
Internal and external, commercial and residential.

Availability

Indent. Please contact us for lead times.

Cemintel Barestone™

Colour Palette



Original



Ash



Lunar



Graphite

As Barestone is a prefinished, manufactured product, images may vary from the actual product in regard to colour and surface finish.
Panels should be inspected by the builder/installer prior to installation to ensure they meet aesthetic requirements.

STATE OF CLAD®

GENERAL enquiries, call us on 0800 333 404
TECHNICAL enquiries, call us on 0800 667 887

Technical information can be found at www.stateofclad.co.nz

Partner platforms:

masterspec

Masterspec

PRODUCTSPEC

Productspec



Eboss



Archipro

STATE OF CLAD®

State of Clad is a brand of NZ Brick Distributors LP

AUCKLAND

956 Great South Rd
Penrose, Auckland 1061
Phone: 09 579 0166

CHRISTCHURCH

1/99 Sawyers Arms Rd,
Papanui, Christchurch 8052
Phone: 03 354 0200

stateofclad.co.nz

